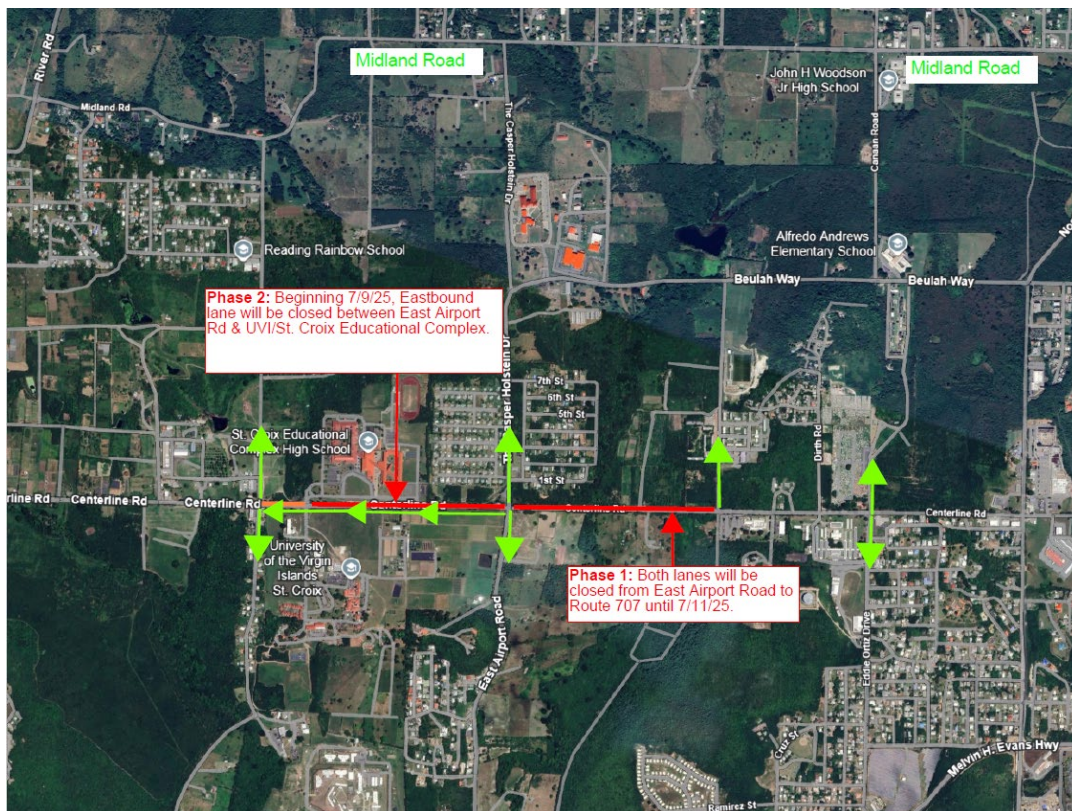




# THE VIRGIN ISLANDS WATER & POWER AUTHORITY CORPORATE COMMUNICATIONS NEWS RELEASE

(340) 774-3552 • [communications@viwapa.vi](mailto:communications@viwapa.vi) / [www.viwapa.vi](http://www.viwapa.vi)

## WAPA Announces New Lane Closures for Upcoming Phase of Queen Mary Highway Electrical Undergrounding Project



*Image: Phase 1 and Phase 2 Lane Closures on Queen Mary Highway*

ST. CROIX, U.S. VIRGIN ISLANDS (July 8, 2025) — The Virgin Islands Water and Power Authority (“WAPA” or “the Authority”) advises the motoring public of an upcoming lane closure along Queen Mary Highway (Centerline Road) as part of the next phase of the Queen Mary Highway Electrical Undergrounding Project.

Beginning Wednesday, July 9, 2025, the eastbound lane of Queen Mary Highway will be closed between East Airport Road and the UVI/St. Croix Educational Complex traffic light, while the westbound lane remains open to allow continued westward traffic flow.

Additionally, the highway will remain closed in both directions between East Airport Road and Route 707 through Friday, July 11, 2025, reopening after that date.

These closures are necessary to support the continued installation of underground electrical infrastructure—critical work that will improve the reliability and storm resilience of St. Croix’s electrical grid.

Motorists are urged to use caution, follow posted detour signs, and comply with flaggers to maintain a safe environment for workers and fellow travelers.

WAPA appreciates the community’s continued patience and cooperation as this essential infrastructure project progresses.

###

**About WAPA:** The Virgin Islands Water and Power Authority is an autonomous agency of the Virgin Islands Government which produces and distributes electricity and drinking water to residential and commercial customers in the territory. WAPA was created by the Fifth Legislature of the Virgin Islands in 1964 through Act No. 1248. Today, WAPA generates electrical power at production plants on St. Thomas and St. Croix and distributes electrical service through smart grids to customers on St. Thomas, St. Croix, St. John, Hassel Island, and Water Island. Potable water is distributed to almost 13,000 customers through water lines and standpipes. WAPA also has the responsibility of installing and maintaining streetlights.

(340) 774-3552 (STT/STJ) • (340) 773-2250 (STX) |  Virgin Islands Water and Power Authority |  @VIWAPA